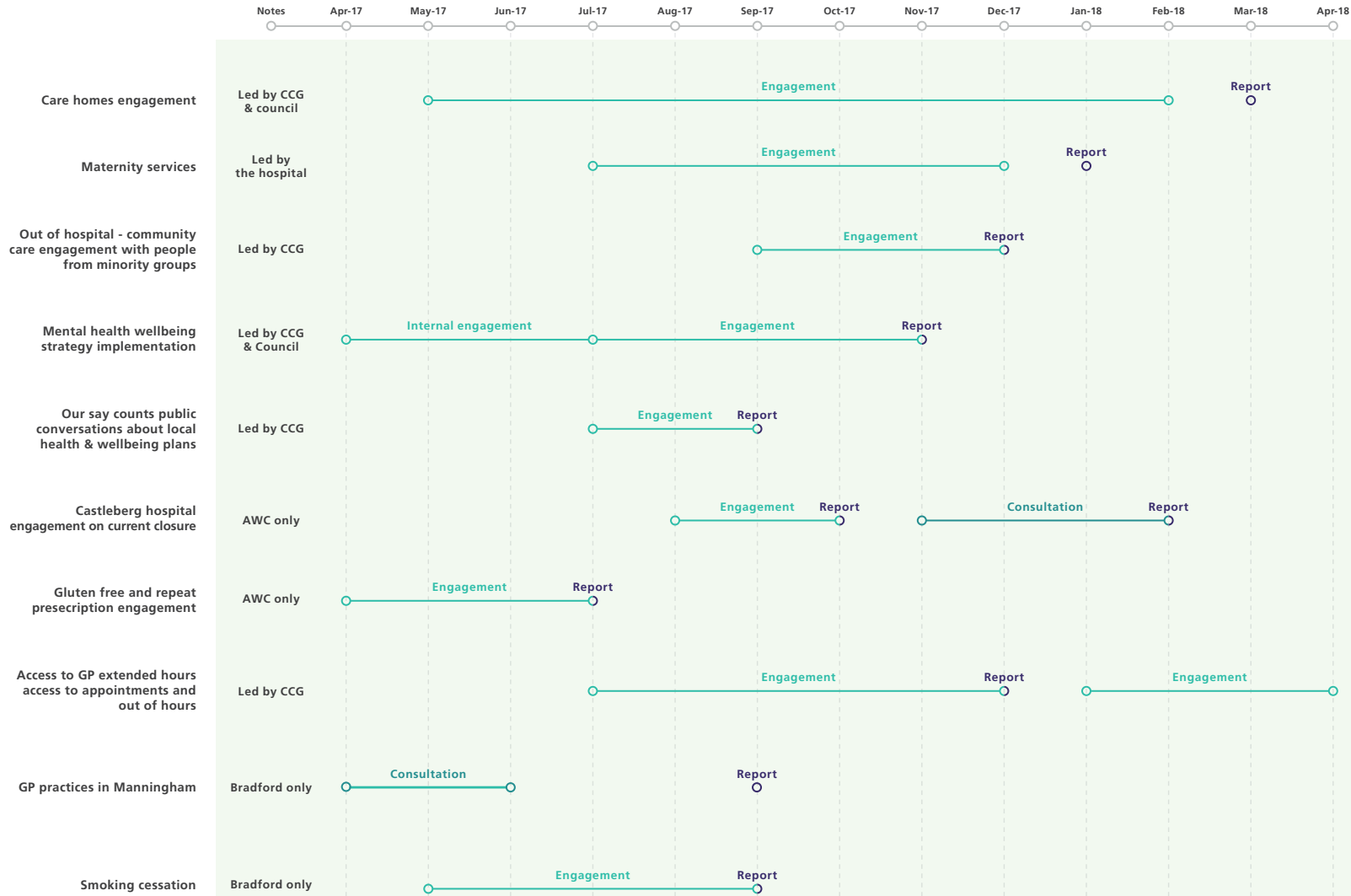


Bradford City, Bradford Districts and Airedale, Wharfedale and Craven (AWC) Clinical Commissioning Group (CCG) local plan engagement and consultation

This time-line is just a snap shot of work taking place across the area of Bradford City, Bradford Districts and Airedale, Wharfedale and Craven from April 2017 to March 2018. It will continue to be updated as engagement and consultation work on these and other priorities develop.

August 2017

(please note these may be subject to change)

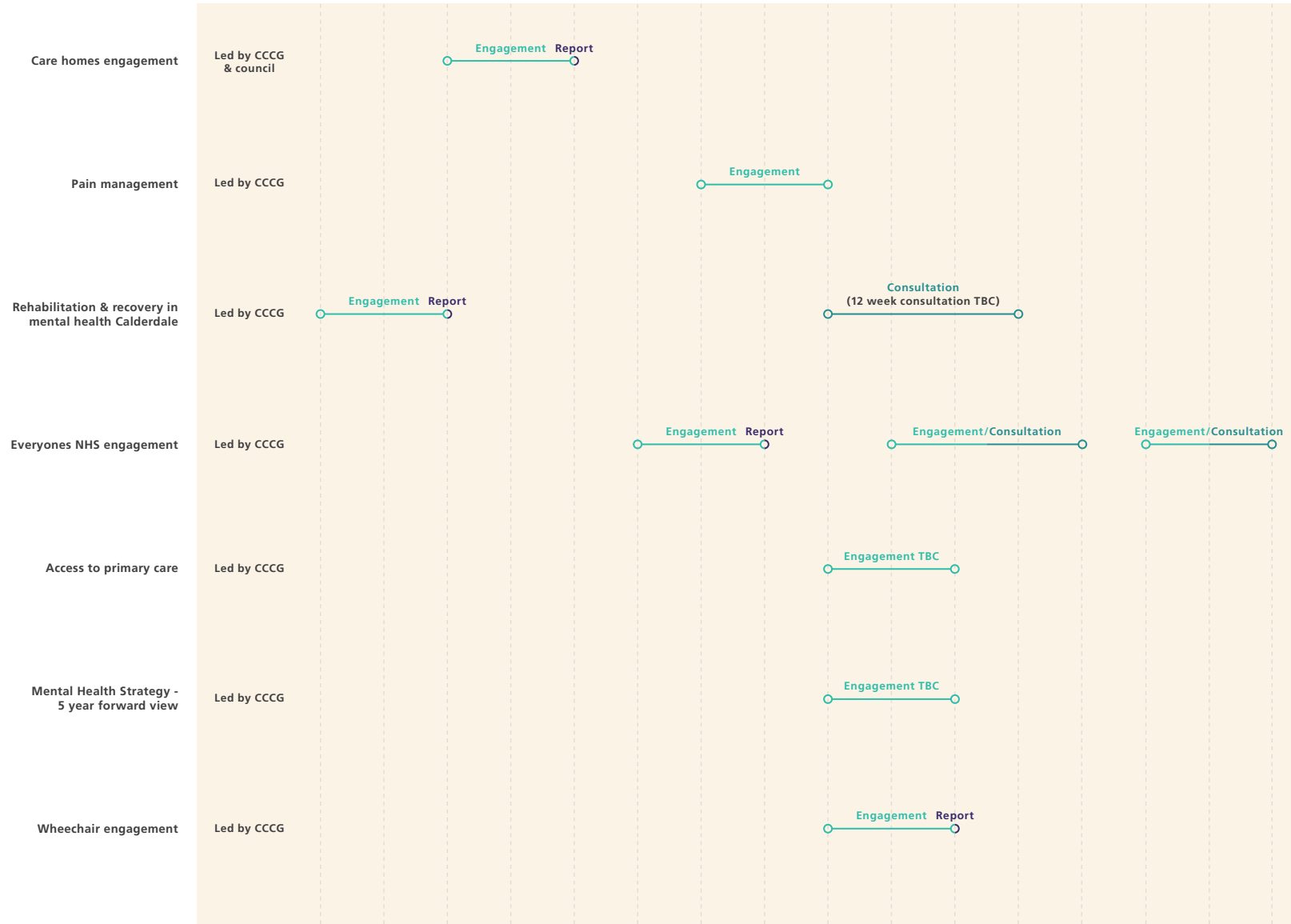


-  Mapping/ planning
-  Engagement
-  Report
-  Consultation

August 2017

(please note these may be subject to change)

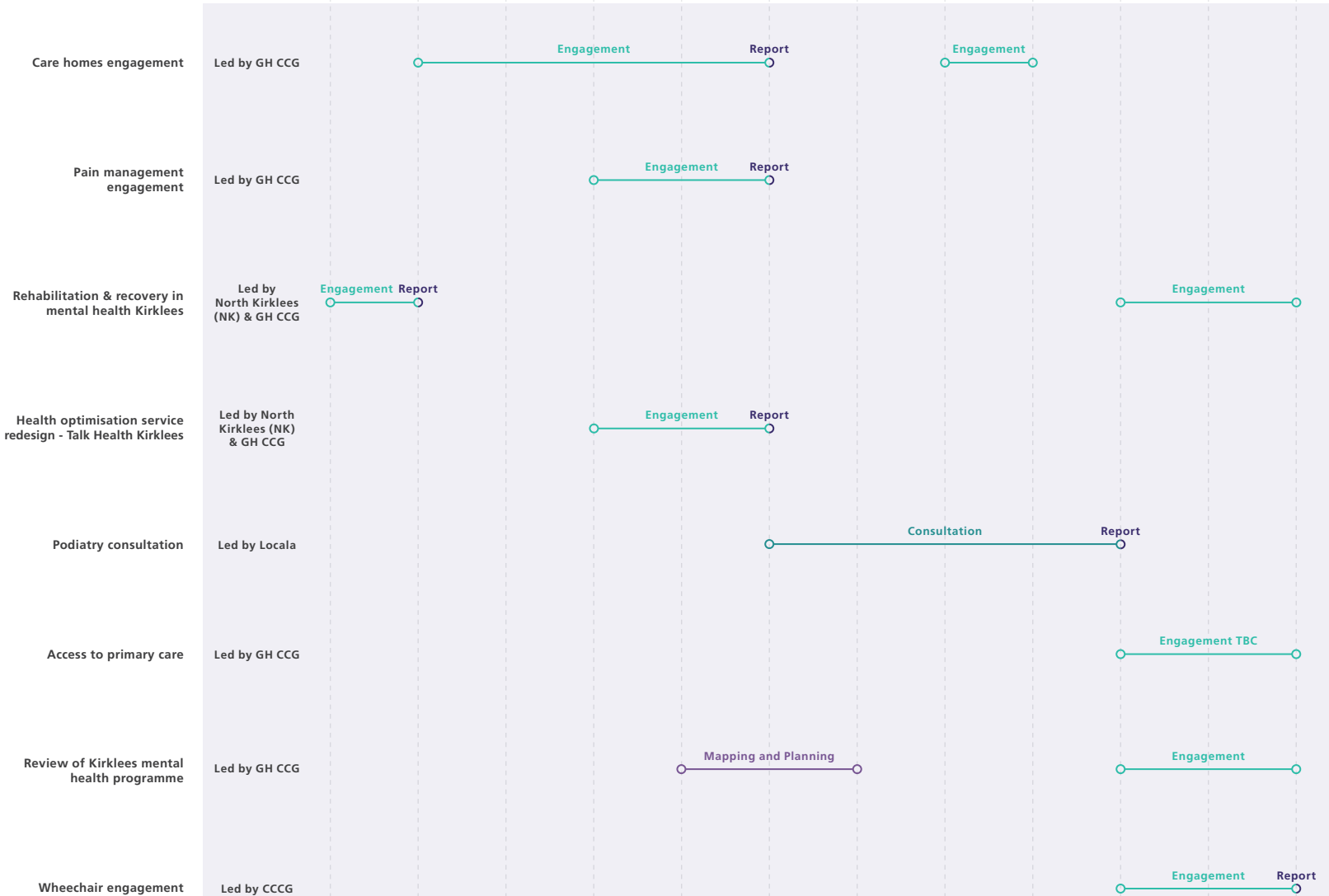
Notes Jan-17 Feb-17 Mar-17 Apr-17 May-17 Jun-17 Jul-17 Aug-17 Sep-17 Oct-17 Nov-17 Dec-17 Jan-18 Feb-18 Mar-18 Apr-18



-  Mapping/
planning
-  Engagement
-  Report
-  Consultation

August 2017

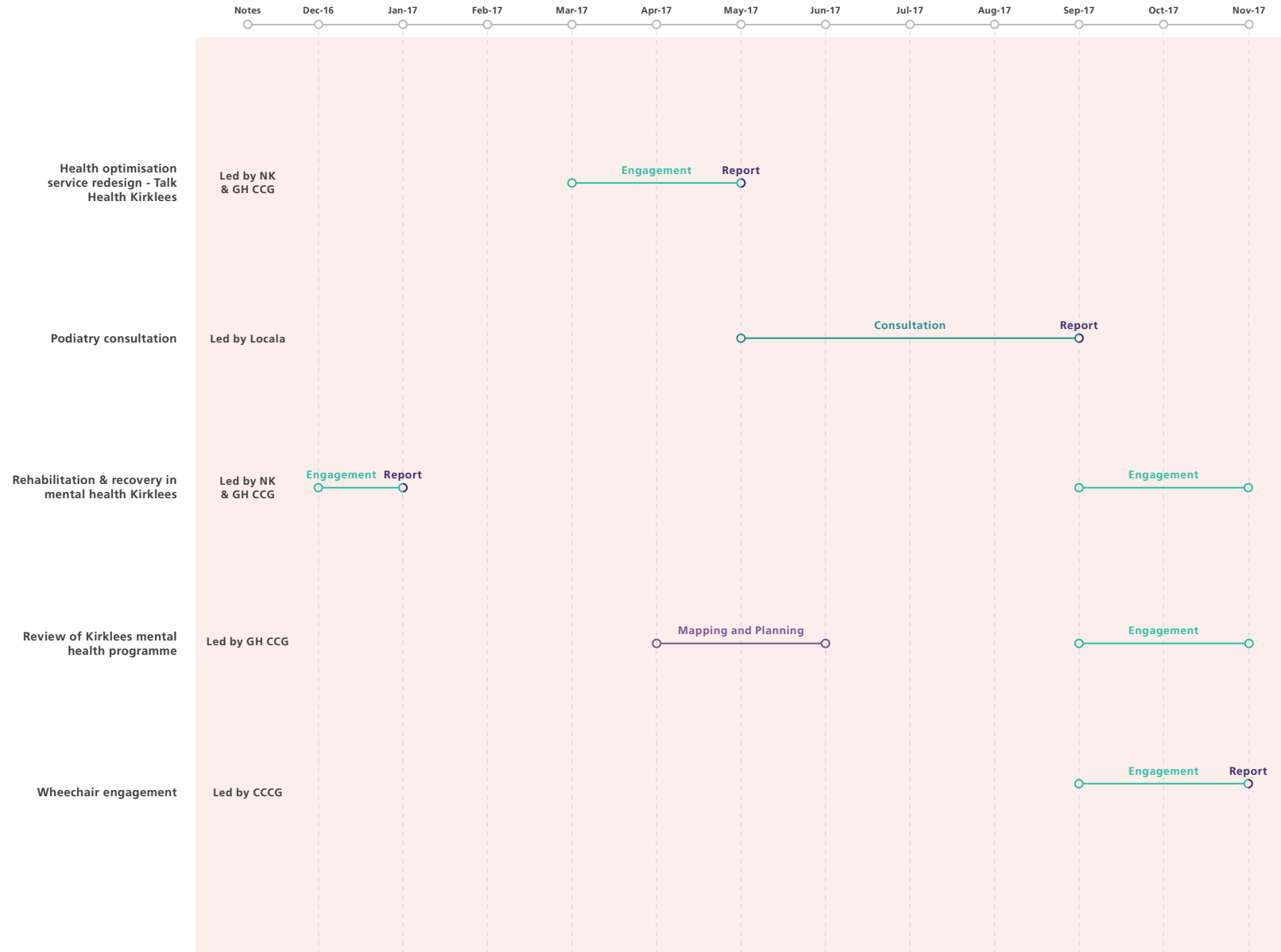
(please note these may be subject to change)



- Mapping/
planning
- Engagement
- Report
- Consultation

August 2017

(please note these may be subject to change)

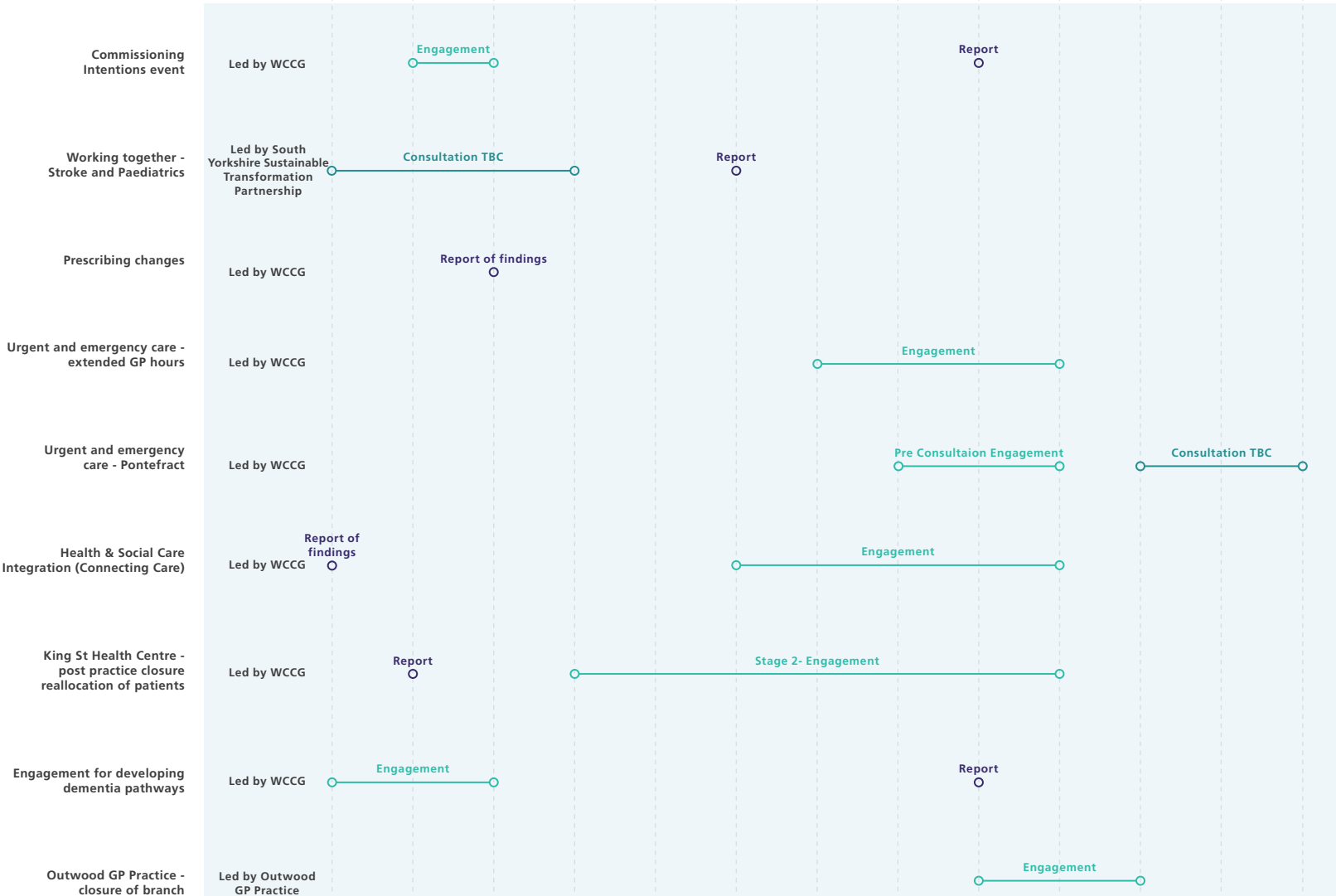


-  Mapping/
planning
-  Engagement
-  Report
-  Consultation

August 2017

(please note these may be subject to change)

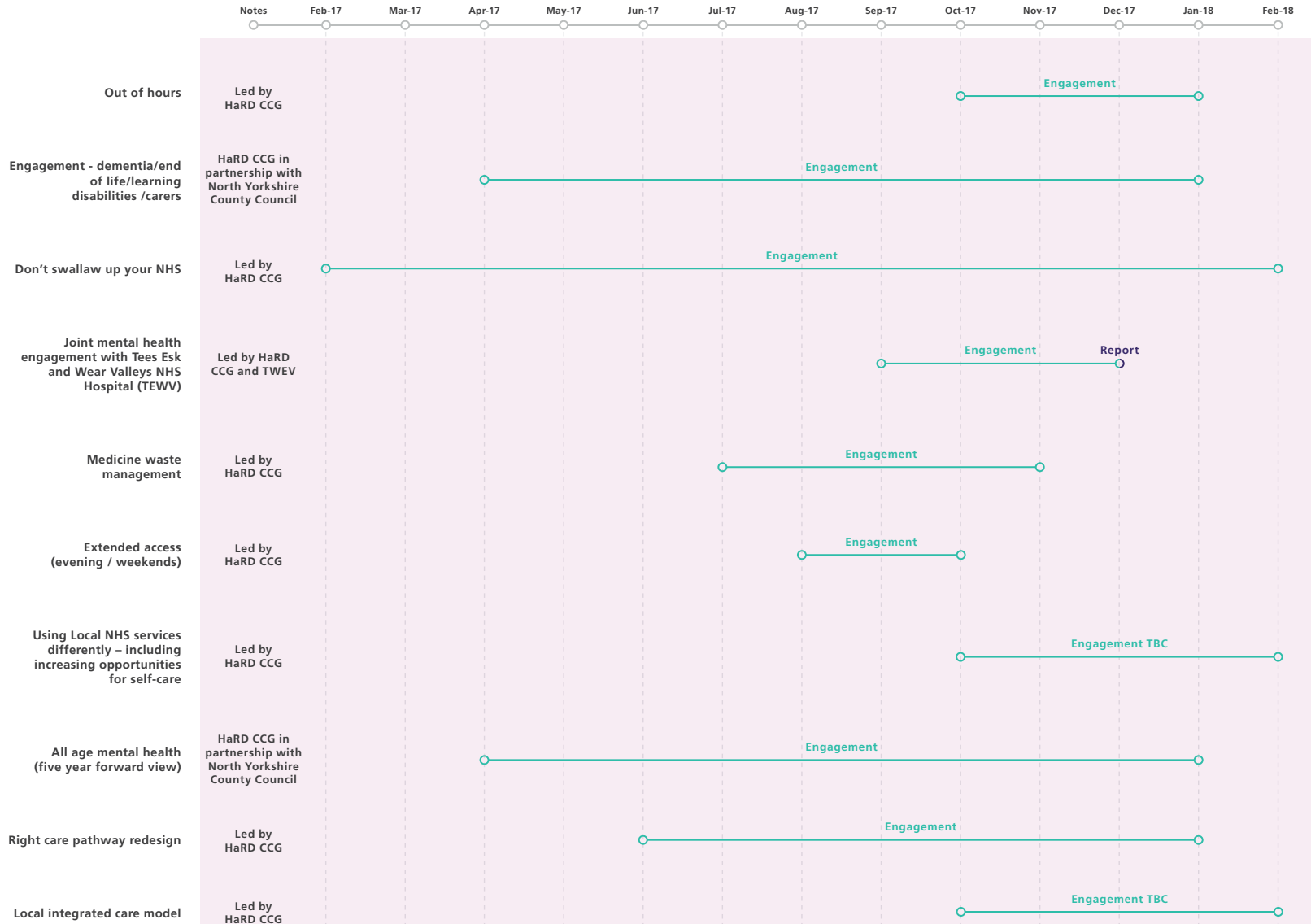
Notes Dec-16 Jan-17 Feb-17 Mar-17 Apr-17 May-17 Jun-17 Jul-17 Aug-17 Sep-17 Oct-17 Nov-17 Dec-17



-  Mapping/ planning
-  Engagement
-  Report
-  Consultation

August 2017

(please note these may be subject to change)



Mapping/
planning



Engagement



Report



Consultation

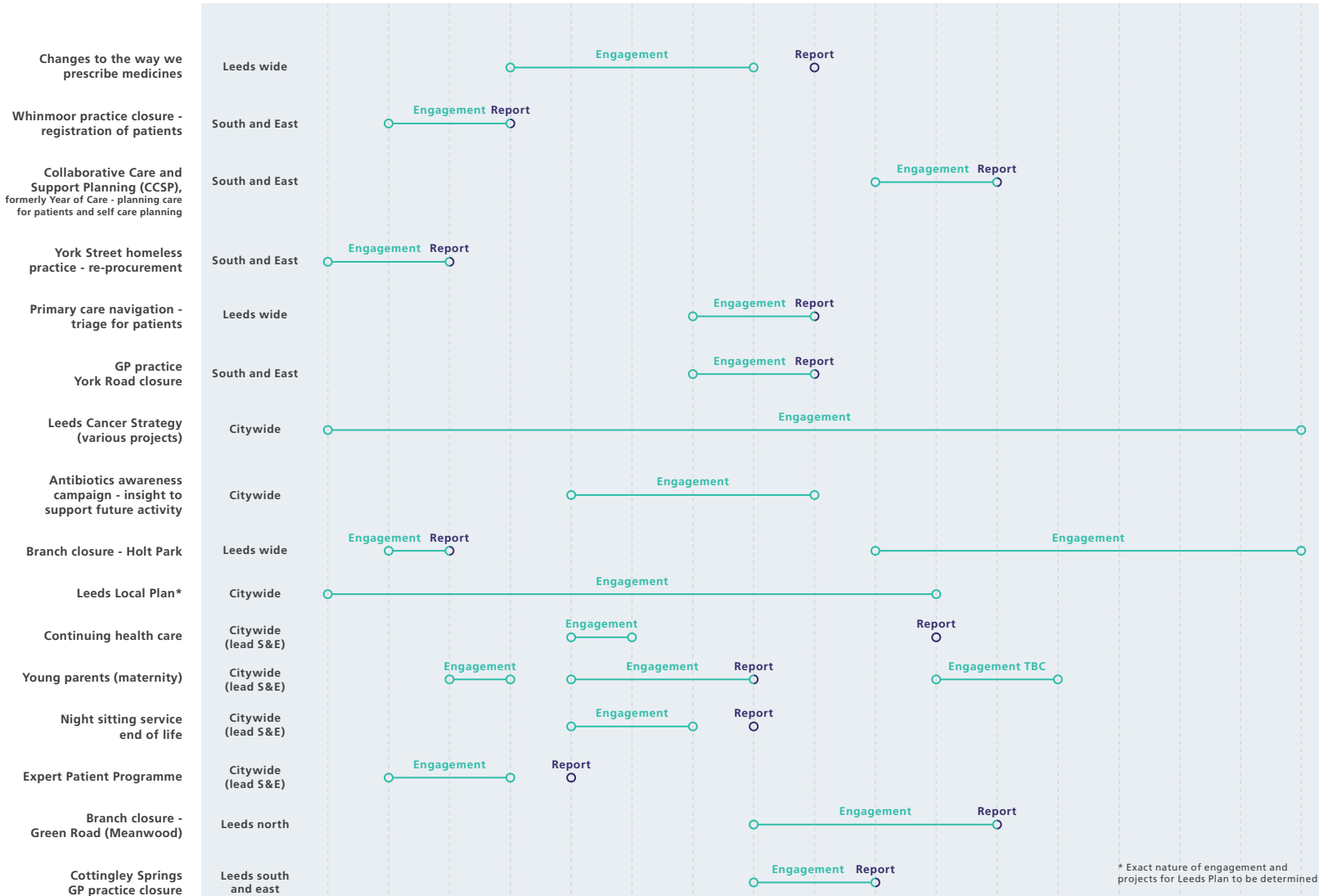
Leeds Clinical Commissioning Groups (North, South & East and West CCG) - local plan engagement and consultation

This time-line is just a snap shot of work taking place across the area of Leeds from December 2016 to April 2018. It will continue to be updated as engagement and consultation work on these and other priorities develop.



August 2017

(please note these may be subject to change)

Notes Dec-16 Jan-17 Feb-17 Mar-17 Apr-17 May-17 Jun-17 Jul-17 Aug-17 Sep-17 Oct-17 Nov-17 Dec-17 Jan-18 Feb-18 Mar-18 Apr-18



* Exact nature of engagement and projects for Leeds Plan to be determined

-  Mapping/planning
-  Engagement
-  Report
-  Consultation